

Pharmacologic Approaches to Glycemic Treatment of Type 2 Diabetes: Synopsis of the 2020 American Diabetes Association's Standards of Medical Care in Diabetes Clinical Guideline

Kacie Doyle-Delgado, DNP, APRN; James J. Chamberlain, MD; Jay H. Shubrook, DO; Neil Skolnik, MD; and Jennifer Trujillo, PharmD, CDCES, BC-ADM

Description: The American Diabetes Association (ADA) updates the Standards of Medical Care in Diabetes annually to provide clinicians, patients, researchers, payers, and other interested parties with evidence-based recommendations for the diagnosis and management of diabetes.

Methods: To develop the 2020 Standards, the ADA Professional Practice Committee, comprising physicians, adult and pediatric endocrinologists, diabetes educators, registered dietitians, epidemiologists, pharmacists, and public health experts, continuously searched MEDLINE (English language only) from 15 October 2018 through August–September 2019 for pertinent studies, including high-quality trials that addressed pharmaco-

logic management of type 2 diabetes. The committee selected and reviewed the studies, developed the recommendations, and solicited feedback from the larger clinical community.

Recommendations: This synopsis focuses on guidance relating to the pharmacologic treatment of adults with type 2 diabetes. Recommendations address oral and noninsulin injectable therapies, insulin treatment, and combination injectable therapies. Results of recent large trials with cardiovascular and renal outcomes are emphasized.

Ann Intern Med. doi:10.7326/M20-2470

Annals.org

For author, article, and disclosure information, see end of text.

This article was published at Annals.org on 1 September 2020.

In 2020, the American Diabetes Association (ADA) made important additions to the section on pharmacologic approaches to glycemic treatment of type 2 diabetes in the Standards of Medical Care in Diabetes. On the basis of new evidence, the ADA added a recommendation on early combination therapy for type 2 diabetes to extend the time to treatment failure. It is now recommended that these drugs be considered for patients in whom atherosclerotic cardiovascular disease (ASCVD), heart failure, or chronic kidney disease (CKD) predominate. The full position statement on pharmacologic treatment can be accessed at care.diabetesjournals.org/content/43/Supplement_1/S98. This synopsis summarizes the recommendations related to pharmacologic management and highlights important evidence from recent large trials with cardiovascular and renal outcomes.

GUIDELINE DEVELOPMENT AND EVIDENCE GRADING

The Professional Practice Committee of the ADA is an expert committee that comprises physicians, diabetes educators, and others who have expertise in such areas as pediatric and adult endocrinology, epidemiology, public health, microvascular complications, cardiovascular risk management, preconception and pregnancy care, diabetes prevention and weight management, and the use of technology in diabetes. For the current revision, committee members systematically searched MEDLINE for pertinent studies published in English from 15 October 2018 to August–September 2019. Committee members reviewed selected studies and, on the basis of new evidence and as needed, revised recommendations, clarified previous recommendations, or aligned the strength of the wording to the evidence.

Recommendations are rated A (well-designed clinical trials or high-quality meta-analyses), B (well-conducted cohort studies), C (uncontrolled studies), or E (expert consensus or clinical experience). The ADA funds development of the Standards of Care from its general revenues, with no industry involvement or support. Detailed information about the committee members and their conflict-of-interest disclosures, methodology, and the complete Standards of Care can be downloaded at professional.diabetes.org/soc.

PHARMACOLOGIC THERAPY FOR TYPE 2 DIABETES: RECOMMENDATIONS

Metformin is the preferred initial pharmacologic agent for the treatment of type 2 diabetes (Grade A recommendation).

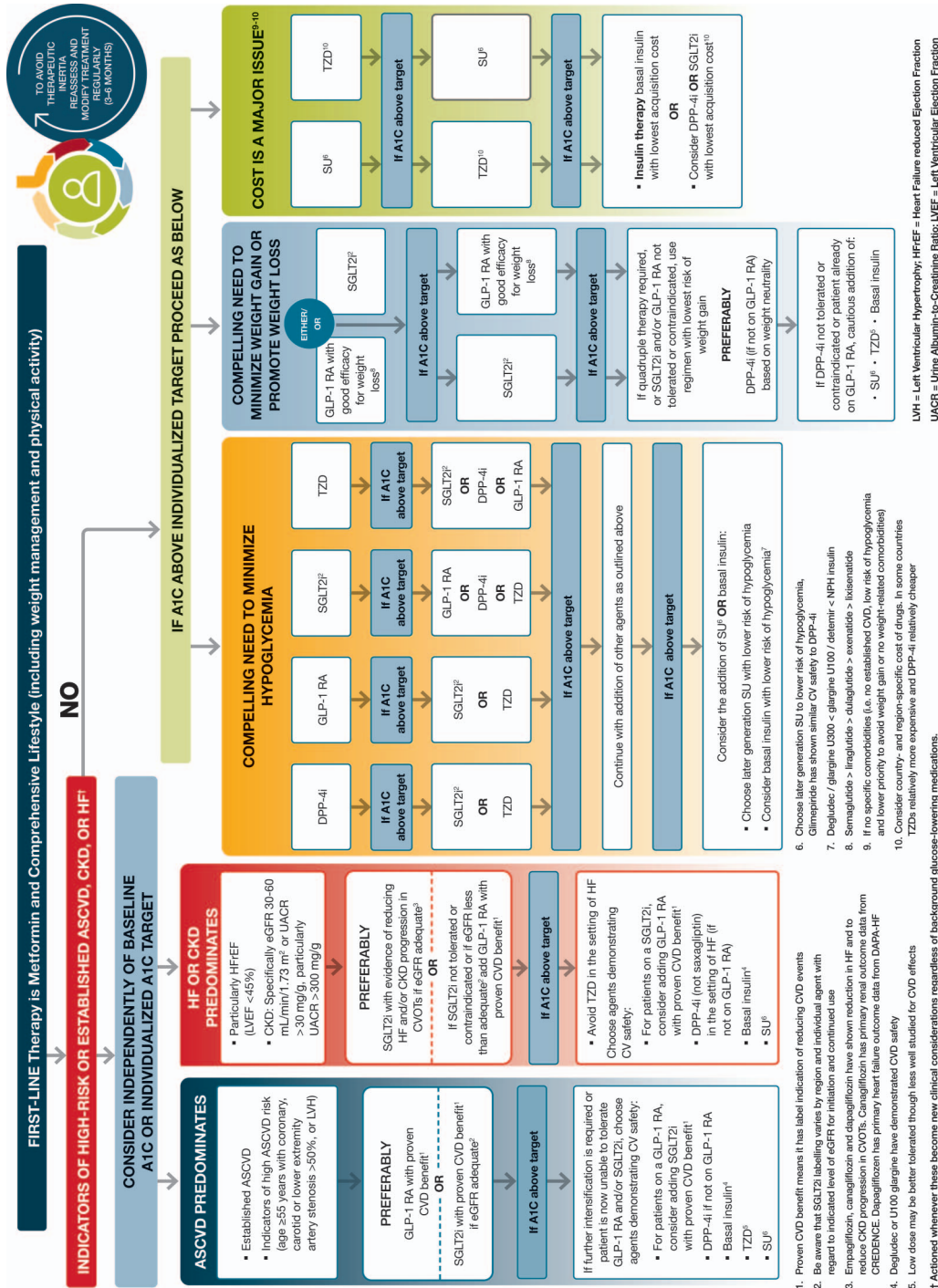
Early combination therapy can be considered in some patients at treatment initiation to extend the time to treatment failure (Grade A recommendation).

The early introduction of insulin should be considered if there is evidence of ongoing catabolism (weight loss), if symptoms of hyperglycemia are present, or when hemoglobin A_{1c} (HbA_{1c}) or blood glucose levels are very high (HbA_{1c} >10% [86 mmol/mol], blood glucose ≥16.7 mmol/L [300 mg/dL]) (Grade E recommendation).

A patient-centered approach should be used to guide the choice of pharmacologic agents. Considerations include cardiovascular comorbid conditions, hypoglycemia risk, impact on weight, cost, risk for side effects, and patient preferences (Appendix Figure [available at Annals.org] and Figure 1) (Grade E recommendation).

Among patients with type 2 diabetes who have established ASCVD or indicators of high risk, established kidney disease, or heart failure, a sodium–glucose cotransporter-2

Figure 1. Glucose-lowering medication in type 2 diabetes: overall approach.



A1C = hemoglobin A_{1c}; ASCVD = atherosclerotic cardiovascular disease; CKD = chronic kidney disease; CREDENCE = Canagliflozin and Renal Events in Diabetes With Established Nephropathy Clinical Evaluation; CV = cardiovascular; CVD = cardiovascular disease; CVOTs = cardiovascular outcome trials; DAPA-HF = Dapagliflozin in Patients With Heart Failure and Reduced Ejection Fraction; DPP-4i = dipeptidyl peptidase-4 inhibitor; eGFR = estimated glomerular filtration rate; GLP-1 RA = glucagon-like peptide-1 receptor agonist; HF = heart failure; NPH = neutral protamine Hagedorn; SGLT2i = sodium-glucose cotransporter-2 inhibitor; SU = sulfonylurea; TZD = thiazolidinedione. (Reproduced from Diabetes Care. 2020;43(Suppl 1):S103 with permission from The American Diabetes Association. Copyright 2020 by The American Diabetes Association.)

(SGLT2) inhibitor or glucagon-like peptide-1 receptor agonist (GLP-1 RA) with demonstrated cardiovascular disease benefit is recommended (Grade A recommendation).

In patients with type 2 diabetes who need greater glucose lowering than can be obtained with oral agents, GLP-1 RAs are preferred to insulin when possible (Grade B recommendation).

The medication regimen and medication-taking behavior should be reevaluated at regular intervals (every 3 to 6 months) and adjusted as needed to incorporate specific factors that affect choice of treatment (Grade E recommendation).

INITIAL THERAPY

The mainstay for initial treatment of type 2 diabetes includes therapeutic lifestyle change. In addition, metformin is recommended as the initial pharmacotherapy in most patients with type 2 diabetes at the time of diagnosis. Metformin is considered safe and effective (1% to 1.5% reduction in HbA_{1c} levels) in patients with no contraindications (such as stage 4 or 5 CKD, advanced heart failure, or a history of lactic acidosis). It may reduce the risk for cardiovascular events and death in persons who are overweight or obese (1). In some patients, it causes substantial gastrointestinal side effects, including bloating, abdominal pain, and diarrhea. For those who do not tolerate the medication because of gastrointestinal side effects, the extended-release formulation may be more acceptable. Long-term metformin use has been associated with vitamin B₁₂ deficiency and worsening neuropathy (2). Periodic testing of vitamin B₁₂ levels may be reasonable (3). The U.S. Food and Drug Administration (FDA) recommends that metformin be used only in patients with an estimated glomerular filtration rate of 30 mL/min/1.73 m² or greater (4). For patients who do not tolerate metformin or have contraindications to its use, alternative pharmacotherapy should be considered.

COMBINATION THERAPY

For patients who have symptoms from advanced hyperglycemia, insulin therapy is recommended to reduce glucotoxicity and lipotoxicity. It is common practice to initiate insulin therapy for patients who present with the following: a blood glucose level of 16.7 mmol/L (300 mg/dL) or greater or an HbA_{1c} concentration higher than 10% (86 mmol/mol), symptoms of hyperglycemia (namely polyuria or polydipsia), or evidence of catabolic weight loss or ketosis (Figure 2). As glucose toxicity resolves, simplifying the treatment regimen or transitioning to oral agents is often possible.

Type 2 diabetes is a progressive disease, and combination therapy is often needed to achieve or maintain glycemic targets (a comprehensive discussion on glycemic targets can be found at care.diabetesjournal.org/content/43/Supplement_1/S66). Current recommendations advise a stepwise approach to treatment for most patients, with the sequential addition of other medications to metformin therapy if the HbA_{1c} target is

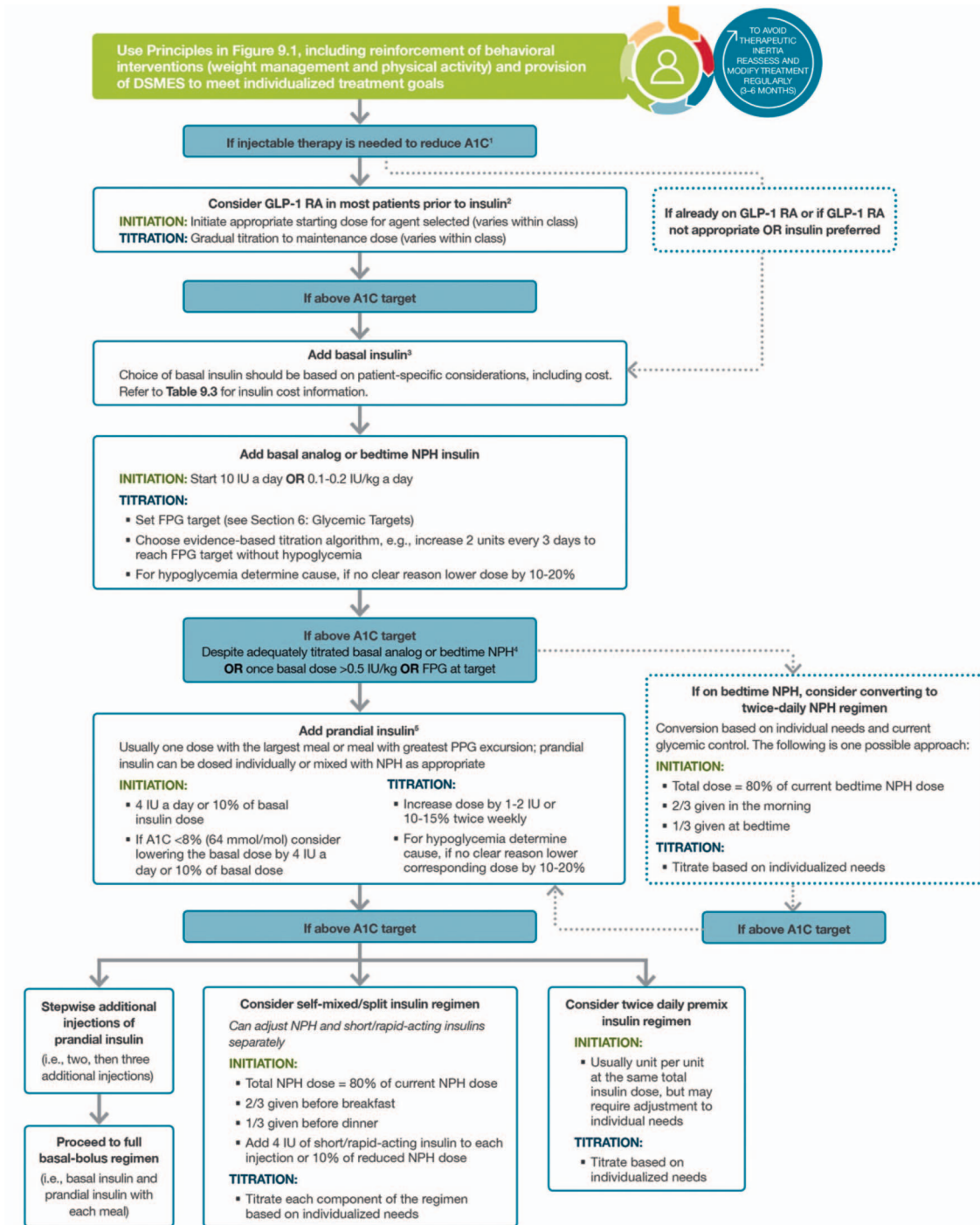
not achieved after approximately 3 months. Initial combination therapy should be considered in patients presenting with HbA_{1c} levels 1.5% to 2% above target, because most medications rarely decrease HbA_{1c} concentrations by more than 1%. Data exist to support initial combination therapy (5, 6). This approach may be superior to sequential addition of medications for both achieving glycemic goals more rapidly and maintaining glycemic control for a longer period (7).

Second-line medication options include SGLT2 inhibitors, GLP-1 RAs, dipeptidyl peptidase-4 (DPP-4) inhibitors, thiazolidinedione, sulfonylureas, and basal insulin. Clinical evidence suggests that each new non-insulin medication added to metformin generally lowers HbA_{1c} levels by approximately 0.7% to 1.0% (8, 9). The choice of agent to add to metformin therapy should be individualized on the basis of patient characteristics, preferences, and drug-specific effects. Important patient characteristics include ASCVD, risk for ASCVD, heart failure, CKD, other comorbid conditions, and the propensity for specific medication-related adverse effects. Medication considerations include efficacy, safety, tolerability, ease of use, and cost.

The first step in deciding which medication should be added to metformin is to determine whether the patient has established ASCVD or a high ASCVD risk (patients aged ≥55 years with coronary, carotid, or lower-extremity artery stenosis >50% or left ventricular hypertrophy), heart failure, or established CKD. If the patient has 1 of these characteristics, an SGLT2 inhibitor or GLP-1 RA with demonstrated CVD benefit is recommended. The addition of these medications should be considered independent from HbA_{1c} level in this patient population. If a patient has heart failure or CKD, an SGLT2 inhibitor is recommended. If an SGLT2 inhibitor cannot be used, a GLP-1 RA should be administered. For patients without established ASCVD, indicators of high ASCVD risk, CKD, or heart failure, the choice of a second agent is based on avoidance of side effects, particularly hypoglycemia and weight gain; cost; and patient preferences (10). If the main patient factor is cost, a sulfonylurea or thiazolidinedione should be considered. These medications are inexpensive and potent. If the main concern is avoiding hypoglycemia, preferred medications include GLP-1 RAs, SGLT2 inhibitors, DPP-4 inhibitors, or a thiazolidinedione. If a compelling need exists to minimize weight gain or promote weight loss, the preferred pharmacotherapy should include GLP-1 RAs or SGLT2 inhibitors. Metformin and DPP-4 inhibitors tend to be weight neutral. Similar considerations apply to patients requiring a third agent to achieve glycemic goals. Treatment regimens should be reviewed continuously for side effects, efficacy, and treatment burden. Some patients may need their medication reduced or withdrawn. Common reasons include intolerable side effects, drug ineffectiveness, drug costs, or a change in glycemic targets. In older adults, relaxing glycemic targets and de-escalating therapy are often appropriate steps, depending on the patient's health status.

Although many patients prefer oral medications, injectable agents often are needed to achieve treatment

Figure 2. Intensifying to injectable therapies.



1. Consider insulin as the first injectable if evidence of ongoing catabolism, symptoms of hyperglycemia are present, when A1C levels (>10% [86 mmol/mol]) or blood glucose levels (≥300 mg/dL [16.7 mmol/L]) are very high, or a diagnosis of type 1 diabetes is a possibility.
 2. When selecting GLP-1 RA, consider: patient preference, A1C lowering, weight-lowering effect, or frequency of injection. If CVD, consider GLP-1 RA with proven CVD benefit.
 3. For patients on GLP-1 RA and basal insulin combination, consider use of a fixed-ratio combination product (iDegLira or iGlarLixi).
 4. Consider switching from evening NPH to a basal analog if the patient develops hypoglycemia and/or frequently forgets to administer NPH in the evening and would be better managed with an AM dose of a long-acting basal insulin.
 5. If adding prandial insulin to NPH, consider initiation of a self-mixed or premixed insulin regimen to decrease the number of injections required.

Figures, tables, and sections cited in this figure appear in the original publication. A1C = hemoglobin A_{1c}; CVD = cardiovascular disease; DSMES = diabetes self-management education and support; FPG = fasting plasma glucose; GLP-1 RA = glucagon-like peptide-1 receptor agonist; NPH = neutral protamine Hagedorn; PPG = postprandial glucose. (Reproduced from Diabetes Care. 2020;43(Suppl 1):S104 with permission from The American Diabetes Association. Copyright 2020 by the American Diabetes Association.)

goals. The 2020 Standards of Care state that if injectable therapy is needed to reduce HbA_{1c} levels, then a GLP-1 RA should be considered in most patients before the use of insulin. Most GLP-1 RAs are injected, although an oral formulation of semaglutide is now available (11). Meta-analyses comparing injectable GLP-1 RAs with insulin in patients needing further glucose lowering indicate similar efficacy between the 2 treatments (12-14). In addition, GLP-1 RAs have the benefit of causing weight loss, rather than weight gain, compared with insulin and carry a lower risk for hypoglycemia.

The cost of diabetes drugs has increased substantially during the past 2 decades (15). Diabetes drug prices may be a major source of stress for patients and contribute to reduced adherence (16). Cost-containing strategies may improve medication-taking behaviors in some patients (17).

CARDIOVASCULAR AND RENAL OUTCOMES TRIALS

Because of concerns that diabetes drugs might lower glucose levels but lead to adverse cardiovascular outcomes, the FDA issued guidance for industry in 2008 requiring large long-term cardiovascular outcome trials of all new medications for treating type 2 diabetes (18). In such outcome trials of DPP-4 inhibitors, SGLT2 inhibitors, and GLP-1 RAs, the study drug is compared with placebo, with both agents given in addition to standard care.

DPP-4 Inhibitor Trials

Trials of DPP-4 inhibitors met the primary outcome of noninferiority, meaning the studies demonstrated that DPP-4 inhibitors do not increase adverse cardiovascular outcomes. However, DPP-4 inhibitors have not demonstrated superiority, meaning that they have not shown cardiovascular benefits relative to placebo.

SGLT2 Inhibitor Trials

EMPA-REG OUTCOME (Empagliflozin Cardiovascular Outcome Event Trial in Type 2 Diabetes Mellitus Patients Removing Excess Glucose) showed that empagliflozin reduced the risk for major adverse cardiovascular events (a composite outcome of myocardial infarction, stroke, and cardiovascular death), cardiovascular death, and hospitalization for heart failure (19). These results led to an FDA indication for empagliflozin for reducing the risk for cardiovascular death in adults with type 2 diabetes and cardiovascular disease. A prespecified secondary analysis of the trial showed that empagliflozin also reduced the risk for incident or worsening nephropathy (20).

Canagliflozin reduced the risk for major adverse cardiovascular events but increased the risk for fracture and lower-limb amputation in CANVAS (Canagliflozin Cardiovascular Assessment Study) (21). The CREDENCE (Canagliflozin and Renal Events in Diabetes With Established Nephropathy Clinical Evaluation) trial involved patients with chronic diabetes-related kidney disease, most (99%) of whom were using an angiotensin-converting enzyme inhibitor or angiotensin-receptor blocker (21). In this trial, canagliflozin reduced the risk for worsening kidney dis-

ease and death (a composite outcome of end-stage kidney disease, doubling of serum creatinine levels, or death from renal or cardiovascular causes), major adverse cardiovascular events, and hospitalizations for heart failure. Canagliflozin did not statistically significantly increase the risk for lower-limb amputations, fractures, acute kidney injury, or hyperkalemia but did increase the risk for diabetic ketoacidosis (2.2 and 0.2 events per 1000 patient-years in the canagliflozin and placebo groups, respectively). In September 2019, the FDA approved canagliflozin to reduce the risk for end-stage kidney disease, doubling of serum creatinine levels, cardiovascular death, and hospitalization for heart failure in adults with type 2 diabetes and diabetic nephropathy with albuminuria greater than 300 mg/g.

In the DECLARE-TIMI 58 (Dapagliflozin Effect on Cardiovascular Events-Thrombolysis in Myocardial Infarction 58) trial, dapagliflozin met the prespecified criteria for noninferiority to placebo with regard to major adverse cardiovascular events, but superiority to placebo was not demonstrated (22). Dapagliflozin reduced the risk for a coprimary composite end point of cardiovascular death or hospitalization for heart failure, driven primarily by the hospitalization end point. No between-group differences were demonstrated for cardiovascular death, rate of amputation, fracture, or volume depletion. Diabetic ketoacidosis was more common with dapagliflozin than placebo (0.3% vs. 0.1%).

GLP-1 RA Trials

The LEADER (Liraglutide Effect and Action in Diabetes: Evaluation of Cardiovascular Outcome Results) trial showed that liraglutide reduced the risk for major adverse cardiovascular events and death from cardiovascular causes (23). The FDA approved the use of liraglutide to reduce the risk for major adverse cardiovascular events, including heart attack, stroke, and cardiovascular death, in adults with type 2 diabetes and ASCVD. Liraglutide also reduced the risk for new or worsening nephropathy, primarily as the result of a decrease in new-onset macroalbuminuria.

In SUSTAIN (Trial to Evaluate Cardiovascular and Other Long-Term Outcomes With Semaglutide in Subjects With Type 2 Diabetes), semaglutide reduced the risk for both major adverse cardiovascular events and new or worsening nephropathy. The reduction in nephropathy risk was primarily the result of a decrease in new-onset macroalbuminuria (24). This trial reported an increased incidence of retinopathy with semaglutide compared with placebo. The PIONEER (Peptide Innovation for Early Diabetes Treatment) trial compared oral semaglutide with placebo in a population mainly (85%) comprising patients with ASCVD or CKD. This trial found that oral semaglutide was noninferior to placebo for the primary composite outcome of major adverse cardiovascular events (25).

In EXSCEL (Exenatide Study of Cardiovascular Event Lowering), extended-release exenatide reduced the risk for major adverse cardiovascular events and all-cause mortality, although the latter finding was not statistically significant (26).

Another trial that included participants with ASCVD or advanced (high) cardiovascular disease risk found

that dulaglutide reduced the risk for major adverse cardiovascular events (26). These results were consistent across the subgroups of patients with and without established ASCVD. All-cause mortality did not differ between the 2 groups. This large outcomes trial was the first to show benefit in a high-risk primary prevention population (27).

Glucose-Lowering Therapies and Heart Failure

Thiazolidinediones should not be used in patients with symptomatic heart failure (28–30). Metformin may be used in patients who have stable heart failure with adequate kidney function (31). The SAVOR-TIMI 53 (Saxagliptin Assessment of Vascular Outcomes Recorded in Patients With Diabetes Mellitus) study showed that patients treated with the DPP-4 inhibitor saxagliptin were more likely to be hospitalized for heart failure than those given placebo (3.5% vs. 2.8%, respectively) (32). Outcome trials of the DPP-4 inhibitors alogliptin, sitagliptin, and linagliptin have not demonstrated an increased risk for hospitalization for heart failure (33–35). No increased or decreased risk for heart failure hospitalization has been identified in the outcome trials of GLP-1 RAs (23, 24, 26, 27, 36).

Among patients with and those without a history of heart failure, SGLT2 inhibitors reduced the incidence of hospitalization for heart failure (37). Outcome trials of empagliflozin, canagliflozin, and dapagliflozin showed that these agents decreased the risk for heart failure hospitalization (19, 21, 22). Similar results were shown with canagliflozin in a population with diabetes and CKD (38).

INSULIN THERAPY

Many persons with type 2 diabetes ultimately require insulin therapy to achieve glycemic targets. Type 2 diabetes is a progressive condition; its progressive nature should be routinely discussed with patients. Providers should discuss the potential need for insulin to escalate therapy rather than presenting it as failure on the patient's part. The functions and benefits of insulin use for achieving glycemic control as the disease progresses and other medications become less effective should be stressed to the patient. When initiating insulin therapy in type 2 diabetes, educating patients to self-titrate insulin doses on the basis of self-monitoring of blood glucose improves glycemic control (39). Patient education should also include diet, self-monitoring of blood glucose, and management of hypoglycemia in any patient using insulin.

Basal Insulin

The addition of basal insulin to metformin and other oral agents is the most convenient initial insulin therapy. Starting doses can be estimated on the basis of body weight (0.1 to 0.2 IU/kg per day) and the degree of hyperglycemia or may be given as a standard 10-IU daily dose. The dosage should be individually titrated every few days on the basis of self-monitored blood glucose levels. An evidence-based titration algorithm may be used. Patients may be instructed to self-titrate their basal insulin by setting a fasting glucose target and increasing their basal insulin by 2 IU every 3

days to reach their fasting plasma glucose target without hypoglycemia. If hypoglycemia occurs, the cause should be determined; if no clear remedial cause is found, the next dose should be lowered by 10% to 20%. Basal insulin limits hyperglycemia overnight and postprandially and restricts hepatic glucose production (40, 41). Long-acting insulin analogues or human neutral protamine Hagedorn (NPH) insulins are used to manage fasting glucose levels. Compared with NPH insulin, long-acting basal analogues (U-100 detemir or glargine) reduced the risk for hypoglycemia in clinical trials (42–46), although this decrease may not persist over time (47). Newer, longer-acting basal analogues (degludec or U-300 glargine) have been shown to reduce hypoglycemia compared with U-100 glargine when used in combination with oral drug therapy (48–54). In clinical practice, these benefits may be modest compared with those of NPH (55).

Insulin costs have climbed steadily for more than 20 years, rapidly outpacing other medical expenses. These costs contribute to therapy nonadherence, because patients may ration or withhold insulin (56). Medication expense is a critical component of effective management and must be considered. Human insulin (regular and NPH) may be appropriate therapy for patients with type 2 diabetes who have a low risk for hypoglycemia, insulin resistance, less stringent HbA_{1c} goals, or limited finances. Neutral protamine Hagedorn, 70/30 NPH/regular, and human regular insulin vials and pens are available for substantially less than the average wholesale price or National Average Drug Acquisition Cost at select pharmacies. Clinicians should be familiar with prescribing these insulins and with their use (55).

Prandial Insulin

Many patients with type 2 diabetes require prandial insulin in addition to basal insulin to reach glucose targets. Dosing 4 IU or 10% of the amount of basal insulin before the largest meal or the meal with the greatest postprandial excursion is a safe method of initiating therapy. Prandial insulin dosing may be intensified on the basis of patient needs. Patients with type 2 diabetes generally have more insulin resistance, require higher daily insulin doses (about 1 IU/kg), and have lower rates of hypoglycemia than patients with type 1 diabetes (57). Titration may be based on HbA_{1c} levels or home glucose monitoring. As prandial insulin doses increase, particularly with the evening meal, providers should consider decreasing basal insulin doses to avoid hypoglycemia, particularly nocturnal hypoglycemia.

Concentrated Insulins

Several concentrated insulins are available for use by patients with type 2 diabetes. U-500 regular insulin is 5 times more concentrated than U-100 regular insulin. Regular U-500 insulin has characteristics similar to those of intermediate-acting (NPH) insulin and may be administered in 2 or 3 injections per day (58). U-200 degludec and U-300 glargine are 2 and 3 times more concentrated, respectively, than their U-100 formulations and may be useful in patients with higher basal insulin requirements. U-300 glargine is longer acting than U-100 glargine but has a slightly lower efficacy per

unit injected (59, 60). A concentrated formulation of rapid-acting insulin lispro, U-200 (200 IU/mL), is also available. U-500 regular insulin is available in both vials and prefilled pens. A dedicated syringe for use with U-500 insulin is available. Other concentrated insulins are available only in prefilled pens to reduce potential errors in dosing.

Inhaled Insulin

Inhaled insulin is available for mealtime use, with a limited dosing range. Studies in persons with type 1 diabetes suggest more rapid pharmacokinetics compared with subcutaneous rapid-acting insulin (61). A pilot study found evidence that compared with injectable rapid-acting insulin, supplemental doses of inhaled insulin administered on the basis of postprandial glucose levels may improve glycemic control without additional weight gain or hypoglycemia (62). Patients require spirometry studies (FEV₁) to identify potential lung disease before and after initiating inhaled insulin treatment. Inhaled insulin is contraindicated in patients with chronic lung diseases, such as chronic obstructive pulmonary disease and asthma. Inhaled insulin is not recommended for persons who currently smoke or recently stopped smoking.

Combination Injectable Therapy

Providers may consider combination injectable therapy for patients whose basal insulin has been titrated appropriately to target fasting blood glucose values but whose HbA_{1c} levels remain above target, or for those whose basal insulin dose is greater than 0.5 IU/kg per day. Basal insulin combined with GLP-1 RA therapy may improve blood glucose levels with less hypoglycemia and weight gain relative to basal-bolus insulin routines (63–65). Available dual-combination products containing basal insulin plus a GLP-1 RA include insulin degludec plus liraglutide and insulin larginine plus lixisenatide.

Intensifying insulin therapy may include the addition of prandial insulin doses to basal insulin. Adding a single dose of prandial insulin before the largest meal of the day is effective and easy, and if necessary, it can be advanced to a routine with several prandial doses (66). Also, 2 doses of premixed insulin per day may be used in place of basal insulin in patients who need additional prandial insulin coverage. Both approaches have advantages and disadvantages. Basal-prandial routines provide more flexibility because patients can eat meals on irregular schedules more easily. Conversely, premixed insulin at 2 doses per day is a convenient method of spreading insulin across the day. Human insulins, separately or as premixed 70/30 formulations, are less costly than insulin analogues. **Figure 2** outlines these various options and provides recommendations for further intensification to help achieve glycemic targets. Metformin therapy should be continued, whereas DPP-4 inhibitors and sulfonylureas usually are withdrawn, when patients advance to combination injectable regimens. Concurrent use of an SGLT2 inhibitor or thiazolidinedione may help improve glycemic control and reduce insulin requirements. Dose titration is important after insulin therapy progresses to a basal-prandial regimen. Adjustments

should be made on the basis of glucose levels provided by data from continuous or self-monitoring.

From St. Mark's Hospital and St. Mark's Diabetes Center, Salt Lake City, Utah (K.D., J.J.C.); Touro University California, College of Osteopathic Medicine, Vallejo, California (J.H.S.); Abington Family Medicine, Jenkintown, Pennsylvania (N.S.); and Skaggs School of Pharmacy and Pharmaceutical Sciences, University of Colorado Anschutz Medical Campus, Aurora, Colorado (J.T.).

Acknowledgment: The authors thank Sarah Bradley and Mindy Saraco, MHA, for their invaluable assistance in the reviewing and editing of this manuscript. The full Standards of Medical Care in Diabetes–2020 was developed by the ADA's Professional Practice Committee: Joshua J. Neumiller, PharmD, CDCES, FADCES (Chair); George Bakris, MD; William T. Cefalu, MD; Jill Crandall, MD; David D'Alessio, MD; Jennifer Green, MD; Elbert Huang, MD, MPH; Kathryn Evans Kreider, DNP, APRN, FNP-BC, BC-ADM; Christine G. Lee, MD, MS; Nisa Maruthur, MD, MHS; Anne Peters, MD; Maria Jose Redondo, MD, PhD, MPH; Jane Reusch, MD; Emily Weatherup, MS, RDN, CDCES; Jennifer Wyckoff, MD; and Deborah Young-Hyman, PhD, CDCES.

Disclosures: Disclosures can be viewed at www.acponline.org/authors/icmje/ConflictOfInterestForms.do?msNum=M20-2470.

Corresponding Author: Kacie Doyle-Delgado, DNP, APRN, St. Mark's Hospital and St. Mark's Diabetes Center, Internal Medicine at St. Mark's, 1160 East 3900 South, Suite 1200, Salt Lake City, UT 84124; e-mail, kaciedoyle@gmail.com.

Current author addresses and author contributions are available at Annals.org.

References

- Holman RR, Paul SK, Bethel MA, et al. 10-year follow-up of intensive glucose control in type 2 diabetes. *N Engl J Med*. 2008;359:1577-89. [PMID: 18784090] doi:10.1056/NEJMoa0806470
- Out M, Kooy A, Leher P, et al. Long-term treatment with metformin in type 2 diabetes and methylmalonic acid: post hoc analysis of a randomized controlled 4.3-year trial. *J Diabetes Complications*. 2018;32:171-178. [PMID: 29174300] doi:10.1016/j.jdiacomp.2017.11.001
- Aroda VR, Edelstein SL, Goldberg RB, et al; Diabetes Prevention Program Research Group. Long-term metformin use and vitamin B12 deficiency in the Diabetes Prevention Program Outcomes Study. *J Clin Endocrinol Metab*. 2016;101:1754-61. [PMID: 26900641] doi:10.1210/jc.2015-3754
- U.S. Food and Drug Administration. FDA Drug Safety Communication: FDA revises warnings regarding use of the diabetes medicine metformin in certain patients with reduced kidney function. Accessed at www.fda.gov/drugs/drug-safety-and-availability/fda-drug-safety-communication-fda-revises-warnings-regarding-use-diabetes-medicine-metformin-certain-on-6-March-2020.
- Abdul-Ghani MA, Puckett C, Triplitt C, et al. Initial combination therapy with metformin, pioglitazone and exenatide is more effective than sequential add-on therapy in subjects with new-onset diabetes. Results from the Efficacy and Durability of Initial Combination Therapy for Type 2 Diabetes (EDICT): a randomized trial. *Diabetes Obes Metab*. 2015;17:268-75. [PMID: 25425451] doi:10.1111/dom.12417
- Phung OJ, Sobieraj DM, Engel SS, et al. Early combination therapy for the treatment of type 2 diabetes mellitus: systematic review and

- meta-analysis. *Diabetes Obes Metab*. 2014;16:410-7. [PMID: 24205921] doi:10.1111/dom.12233
7. Matthews DR, Paldanius PM, Proot P, et al; VERIFY study group. Glycaemic durability of an early combination therapy with vildagliptin and metformin versus sequential metformin monotherapy in newly diagnosed type 2 diabetes (VERIFY): a 5-year, multicentre, randomised, double-blind trial. *Lancet*. 2019;394:1519-29. [PMID: 31542292] doi:10.1016/S0140-6736(19)32131-2
 8. Bennett WL, Maruthur NM, Singh S, et al. Comparative effectiveness and safety of medications for type 2 diabetes: an update including new drugs and 2-drug combinations. *Ann Intern Med*. 2011;154:602-13. [PMID: 21403054] doi:10.7326/0003-4819-154-9-201105030-00336
 9. Maloney A, Rosenstock J, Fonseca V. A model-based meta-analysis of 24 antihyperglycemic drugs for type 2 diabetes: comparison of treatment effects at therapeutic doses. *Clin Pharmacol Ther*. 2019;105:1213-1223. [PMID: 30457671] doi:10.1002/cpt.1307
 10. Vijan S, Sussman JB, Yudkin JS, et al. Effect of patients' risks and preferences on health gains with plasma glucose level lowering in type 2 diabetes mellitus. *JAMA Intern Med*. 2014;174:1227-34. [PMID: 24979148] doi:10.1001/jamainternmed.2014.2894
 11. Pratley R, Amod A, Hoff ST, et al; PIONEER 4 investigators. Oral semaglutide versus subcutaneous liraglutide and placebo in type 2 diabetes (PIONEER 4): a randomised, double-blind, phase 3a trial. *Lancet*. 2019;394:39-50. [PMID: 31186120] doi:10.1016/S0140-6736(19)31271-1
 12. Singh S, Wright EE Jr, Kwan AY, et al. Glucagon-like peptide-1 receptor agonists compared with basal insulins for the treatment of type 2 diabetes mellitus: a systematic review and meta-analysis. *Diabetes Obes Metab*. 2017;19:228-238. [PMID: 27717130] doi:10.1111/dom.12805
 13. Levin PA, Nguyen H, Wittbrodt ET, et al. Glucagon-like peptide-1 receptor agonists: a systematic review of comparative effectiveness research. *Diabetes Metab Syndr Obes*. 2017;10:123-139. [PMID: 28435305] doi:10.2147/DMSO.S130834
 14. Abd El Aziz MS, Kahle M, Meier JJ, et al. A meta-analysis comparing clinical effects of short- or long-acting GLP-1 receptor agonists versus insulin treatment from head-to-head studies in type 2 diabetic patients. *Diabetes Obes Metab*. 2017;19:216-227. [PMID: 27717195] doi:10.1111/dom.12804
 15. Riddle MC, Herman WH. The cost of diabetes care-an elephant in the room. *Diabetes Care*. 2018;41:929-932. [PMID: 29678864] doi:10.2337/dci18-0012
 16. Kang H, Lobo JM, Kim S, et al. Cost-related medication non-adherence among U.S. adults with diabetes. *Diabetes Res Clin Pract*. 2018;143:24-33. [PMID: 29944967] doi:10.1016/j.diabres.2018.06.016
 17. Patel MR, Piette JD, Resnicow K, et al. Social determinants of health, cost-related nonadherence, and cost-reducing behaviors among adults with diabetes: findings from the National Health Interview Survey. *Med Care*. 2016;54:796-803. [PMID: 27219636] doi:10.1097/MLR.0000000000000565
 18. U.S. Food and Drug Administration. Guidance for Industry on Diabetes Mellitus-Evaluating Cardiovascular Risk in New Antidiabetic Therapies to Treat Type 2 Diabetes; Availability. Federal Register. Accessed at www.federalregister.gov/documents/2008/12/19/E8-30086/guidance-for-industry-on-diabetes-mellitus-evaluating-cardiovascular-risk-in-new-antidiabetic on 18 June 2020.
 19. Zinman B, Wanner C, Lachin JM, et al; EMPA-REG OUTCOME Investigators. Empagliflozin, cardiovascular outcomes, and mortality in type 2 diabetes. *N Engl J Med*. 2015;373:2117-28. [PMID: 26378978] doi:10.1056/NEJMoa1504720
 20. Wanner C, Inzucchi SE, Lachin JM, et al; EMPA-REG OUTCOME Investigators. Empagliflozin and progression of kidney disease in type 2 diabetes. *N Engl J Med*. 2016;375:323-34. [PMID: 27299675] doi:10.1056/NEJMoa1515920
 21. Neal B, Perkovic V, Mahaffey KW, et al; CANVAS Program Collaborative Group. Canagliflozin and cardiovascular and renal events in type 2 diabetes. *N Engl J Med*. 2017;377:644-657. [PMID: 28605608] doi:10.1056/NEJMoa1611925
 22. Wiviott SD, Raz I, Bonaca MP, et al; DECLARE-TIMI 58 Investigators. Dapagliflozin and cardiovascular outcomes in type 2 diabetes. *N Engl J Med*. 2019;380:347-357. [PMID: 30415602] doi:10.1056/NEJMoa1812389
 23. Marso SP, Daniels GH, Brown-Frandsen K, et al; LEADER Steering Committee. Liraglutide and cardiovascular outcomes in type 2 diabetes. *N Engl J Med*. 2016;375:311-22. [PMID: 27295427] doi:10.1056/NEJMoa1603827
 24. Marso SP, Bain SC, Consoli A, et al; SUSTAIN-6 Investigators. Semaglutide and cardiovascular outcomes in patients with type 2 diabetes. *N Engl J Med*. 2016;375:1834-1844. [PMID: 27633186]
 25. Husain M, Birkenfeld AL, Donsmark M, et al; PIONEER 6 Investigators. Oral semaglutide and cardiovascular outcomes in patients with type 2 diabetes. *N Engl J Med*. 2019;381:841-851. [PMID: 31185157] doi:10.1056/NEJMoa1901118
 26. Holman RR, Bethel MA, Mentz RJ, et al; EXSCEL Study Group. Effects of once-weekly exenatide on cardiovascular outcomes in type 2 diabetes. *N Engl J Med*. 2017;377:1228-1239. [PMID: 28910237] doi:10.1056/NEJMoa1612917
 27. Gerstein HC, Colhoun HM, Dagenais GR, et al; REWIND Investigators. Dulaglutide and cardiovascular outcomes in type 2 diabetes (REWIND): a double-blind, randomised placebo-controlled trial. *Lancet*. 2019;394:121-130. [PMID: 31189511] doi:10.1016/S0140-6736(19)31149-3
 28. Dormandy JA, Charbonnel B, Eckland DJ, et al; PROactive Investigators. Secondary prevention of macrovascular events in patients with type 2 diabetes in the PROactive Study (PROspective pioglitAzone Clinical Trial In macroVascular Events): a randomised controlled trial. *Lancet*. 2005;366:1279-89. [PMID: 16214598]
 29. Singh S, Loke YK, Furberg CD. Long-term risk of cardiovascular events with rosiglitazone: a meta-analysis. *JAMA*. 2007;298:1189-95. [PMID: 17848653]
 30. Lincoff AM, Wolski K, Nicholls SJ, et al. Pioglitazone and risk of cardiovascular events in patients with type 2 diabetes mellitus: a meta-analysis of randomized trials. *JAMA*. 2007;298:1180-8. [PMID: 17848652]
 31. U.S. Food and Drug Administration. FDA Drug Safety Communication: FDA revises warnings regarding use of the diabetes medicine metformin in certain patients with reduced kidney function. Accessed at www.fda.gov/Drugs/DrugSafety/ucm493244.htm on 14 June 2020.
 32. Scirica BM, Bhatt DL, Braunwald E, et al; SAVOR-TIMI 53 Steering Committee and Investigators. Saxagliptin and cardiovascular outcomes in patients with type 2 diabetes mellitus. *N Engl J Med*. 2013;369:1317-26. [PMID: 23992601] doi:10.1056/NEJMoa1307684
 33. Zannad F, Cannon CP, Cushman WC, et al; EXAMINE Investigators. Heart failure and mortality outcomes in patients with type 2 diabetes taking alogliptin versus placebo in EXAMINE: a multicentre, randomised, double-blind trial. *Lancet*. 2015;385:2067-76. [PMID: 25765696] doi:10.1016/S0140-6736(14)62225-X
 34. Green JB, Bethel MA, Armstrong PW, et al; TECOS Study Group. Effect of sitagliptin on cardiovascular outcomes in type 2 diabetes. *N Engl J Med*. 2015;373:232-42. [PMID: 26052984] doi:10.1056/NEJMoa1501352
 35. Rosenstock J, Perkovic V, Johansen OE, et al; CARMELINA Investigators. Effect of linagliptin vs placebo on major cardiovascular events in adults with type 2 diabetes and high cardiovascular and renal risk: the CARMELINA randomized clinical trial. *JAMA*. 2019;321:69-79. [PMID: 30418475] doi:10.1001/jama.2018.18269
 36. Pfeffer MA, Claggett B, Diaz R, et al; ELIXA Investigators. Lixisenatide in patients with type 2 diabetes and acute coronary syndrome. *N Engl J Med*. 2015;373:2247-57. [PMID: 26630143] doi:10.1056/NEJMoa1509225
 37. Fitchett D, Butler J, van de Borne P, et al; EMPA-REG OUTCOME® trial investigators. Effects of empagliflozin on risk for cardiovascular death and heart failure hospitalization across the spectrum of heart failure risk in the EMPA-REG OUTCOME® trial. *Eur Heart J*. 2018;39:363-370. [PMID: 29020355] doi:10.1093/eurheartj/ehx511

38. Perkovic V, Jardine MJ, Neal B, et al; CREDENCE Trial Investigators. Canagliflozin and renal outcomes in type 2 diabetes and nephropathy. *N Engl J Med*. 2019;380:2295-2306. [PMID: 30990260] doi:10.1056/NEJMoa1811744
39. Blonde L, Merilainen M, Karwe V, et al; TITRATE Study Group. Patient-directed titration for achieving glycaemic goals using a once-daily basal insulin analogue: an assessment of two different fasting plasma glucose targets - the TITRATE study. *Diabetes Obes Metab*. 2009;11:623-31. [PMID: 19515182] doi:10.1111/j.1463-1326.2009.01060.x
40. Porcellati F, Lucidi P, Cioli P, et al. Pharmacokinetics and pharmacodynamics of insulin glargine given in the evening as compared with in the morning in type 2 diabetes. *Diabetes Care*. 2015;38:503-12. [PMID: 25524950] doi:10.2337/dc14-0649
41. Wang Z, Hedrington MS, Gogitidze Joy N, et al. Dose-response effects of insulin glargine in type 2 diabetes. *Diabetes Care*. 2010;33:1555-60. [PMID: 20357371] doi:10.2337/dc09-2011
42. Singh SR, Ahmad F, Lal A, et al. Efficacy and safety of insulin analogues for the management of diabetes mellitus: a meta-analysis. *CMAJ*. 2009;180:385-97. [PMID: 19221352] doi:10.1503/cmaj.081041
43. Horvath K, Jeitler K, Berghold A, et al. Long-acting insulin analogues versus NPH insulin (human isophane insulin) for type 2 diabetes mellitus. *Cochrane Database Syst Rev*. 2007:CD005613. [PMID: 17443605]
44. Monami M, Marchionni N, Mannucci E. Long-acting insulin analogues versus NPH human insulin in type 2 diabetes: a meta-analysis. *Diabetes Res Clin Pract*. 2008;81:184-9. [PMID: 18495286] doi:10.1016/j.diabres.2008.04.007
45. Owens DR, Traylor L, Mullins P, et al. Patient-level meta-analysis of efficacy and hypoglycaemia in people with type 2 diabetes initiating insulin glargine 100U/mL or neutral protamine Hagedorn insulin analysed according to concomitant oral antidiabetes therapy. *Diabetes Res Clin Pract*. 2017;124:57-65. [PMID: 28092788] doi:10.1016/j.diabres.2016.10.022
46. Riddle MC, Rosenstock J, Gerich J; Insulin Glargine 4002 Study Investigators. The treat-to-target trial: randomized addition of glargine or human NPH insulin to oral therapy of type 2 diabetic patients. *Diabetes Care*. 2003;26:3080-6. [PMID: 14578243]
47. Yki-Järvinen H, Kauppinen-Mäkelin R, Tiikkainen M, et al. Insulin glargine or NPH combined with metformin in type 2 diabetes: the LANMET study. *Diabetologia*. 2006;49:442-51. [PMID: 16456680]
48. Bolli GB, Riddle MC, Bergenstal RM, et al; on behalf of the EDITION 3 study investigators. New insulin glargine 300 U/ml compared with glargine 100 U/ml in insulin-naïve people with type 2 diabetes on oral glucose-lowering drugs: a randomized controlled trial (EDITION 3). *Diabetes Obes Metab*. 2015;17:386-94. [PMID: 25641260] doi:10.1111/dom.12438
49. Terauchi Y, Koyama M, Cheng X, et al. New insulin glargine 300 U/ml versus glargine 100 U/ml in Japanese people with type 2 diabetes using basal insulin and oral antihyperglycaemic drugs: glucose control and hypoglycaemia in a randomized controlled trial (EDITION JP 2). *Diabetes Obes Metab*. 2016;18:366-74. [PMID: 26662838] doi:10.1111/dom.12618
50. Yki-Järvinen H, Bergenstal RM, Bolli GB, et al. Glycaemic control and hypoglycaemia with new insulin glargine 300 U/ml versus insulin glargine 100 U/ml in people with type 2 diabetes using basal insulin and oral antihyperglycaemic drugs: the EDITION 2 randomized 12-month trial including 6-month extension. *Diabetes Obes Metab*. 2015;17:1142-9. [PMID: 26172084] doi:10.1111/dom.12532
51. Marso SP, McGuire DK, Zinman B, et al; DEVOTE Study Group. Efficacy and safety of degludec versus glargine in type 2 diabetes. *N Engl J Med*. 2017;377:723-732. [PMID: 28605603] doi:10.1056/NEJMoa1615692
52. Rodbard HW, Cariou B, Zinman B, et al; BEGIN Once Long trial investigators. Comparison of insulin degludec with insulin glargine in insulin-naïve subjects with type 2 diabetes: a 2-year randomized, treat-to-target trial. *Diabet Med*. 2013;30:1298-304. [PMID: 23952326] doi:10.1111/dme.12303
53. Wysham C, Bhargava A, Chaykin L, et al. Effect of insulin degludec vs insulin glargine U100 on hypoglycemia in patients with type 2 diabetes: the SWITCH 2 randomized clinical trial. *JAMA*. 2017;318:45-56. [PMID: 28672317] doi:10.1001/jama.2017.7117
54. Zinman B, Philis-Tsimikas A, Cariou B, et al; NN1250-3579 (BEGIN Once Long) Trial Investigators. Insulin degludec versus insulin glargine in insulin-naïve patients with type 2 diabetes: a 1-year, randomized, treat-to-target trial (BEGIN Once Long). *Diabetes Care*. 2012;35:2464-71. [PMID: 23043166] doi:10.2337/dc12-1205
55. Lipska KJ, Parker MM, Moffet HH, et al. Association of initiation of basal insulin analogs vs neutral protamine Hagedorn insulin with hypoglycemia-related emergency department visits or hospital admissions and with glycemic control in patients with type 2 diabetes. *JAMA*. 2018;320:53-62. [PMID: 29936529] doi:10.1001/jama.2018.7993
56. Cefalu WT, Dawes DE, Gavlak G, et al; Insulin Access and Affordability Working Group. Insulin access and affordability working group: conclusions and recommendations. *Diabetes Care*. 2018;41:1299-1311. [PMID: 29739814] doi:10.2337/dci18-0019
57. McCall AL. Insulin therapy and hypoglycemia. *Endocrinol Metab Clin North Am*. 2012;41:57-87. [PMID: 22575407] doi:10.1016/j.jec.2012.03.001
58. Wysham C, Hood RC, Warren ML, et al. Effect of total daily dose on efficacy, dosing, and safety of 2 dose titration regimens of human regular U500 insulin in severely insulin-resistant patients with type 2 diabetes. *Endocr Pract*. 2016;22:653-65. [PMID: 26789342] doi:10.4158/EP15959.OR
59. Riddle MC, Yki-Järvinen H, Bolli GB, et al. One-year sustained glycaemic control and less hypoglycaemia with new insulin glargine 300 U/ml compared with 100 U/ml in people with type 2 diabetes using basal plus meal-time insulin: the EDITION 1 12-month randomized trial, including 6-month extension. *Diabetes Obes Metab*. 2015;17:835-42. [PMID: 25846721] doi:10.1111/dom.12472
60. Yki-Järvinen H, Bergenstal R, Ziemer M, et al; EDITION 2 Study Investigators. New insulin glargine 300 units/mL versus glargine 100 units/mL in people with type 2 diabetes using oral agents and basal insulin: glucose control and hypoglycemia in a 6-month randomized controlled trial (EDITION 2). *Diabetes Care*. 2014;37:3235-43. [PMID: 25193531] doi:10.2337/dc14-0990
61. Bode BW, McGill JB, Lorber DL, et al; Affinity 1 Study Group. Inhaled technosphere insulin compared with injected prandial insulin in type 1 diabetes: a randomized 24-week trial. *Diabetes Care*. 2015;38:2266-73. [PMID: 26180109] doi:10.2337/dc15-0075
62. Akturk HK, Snell-Bergeon JK, Rewers A, et al. Improved post-prandial glucose with inhaled technosphere insulin compared with insulin aspart in patients with type 1 diabetes on multiple daily injections: the STAT study. *Diabetes Technol Ther*. 2018;20:639-647. [PMID: 30207748] doi:10.1089/dia.2018.0200
63. Diamant M, Nauck MA, Shaginian R, et al; 4B Study Group. Glucagon-like peptide 1 receptor agonist or bolus insulin with optimized basal insulin in type 2 diabetes. *Diabetes Care*. 2014;37:2763-73. [PMID: 25011946] doi:10.2337/dc14-0876
64. Eng C, Kramer CK, Zinman B, et al. Glucagon-like peptide-1 receptor agonist and basal insulin combination treatment for the management of type 2 diabetes: a systematic review and meta-analysis. *Lancet*. 2014;384:2228-34. [PMID: 25220191] doi:10.1016/S0140-6736(14)61335-0
65. Maiorino MI, Chiodini P, Bellastella G, et al. Insulin and glucagon-like peptide 1 receptor agonist combination therapy in type 2 diabetes: a systematic review and meta-analysis of randomized controlled trials. *Diabetes Care*. 2017;40:614-624. [PMID: 28325801] doi:10.2337/dc16-1957
66. Rodbard HW, Visco VE, Andersen H, et al. Treatment intensification with stepwise addition of prandial insulin aspart boluses compared with full basal-bolus therapy (FullSTEP Study): a randomised, treat-to-target clinical trial. *Lancet Diabetes Endocrinol*. 2014;2:30-7. [PMID: 24622667] doi:10.1016/S2213-8587(13)70090-1

Current Author Addresses: Drs. Doyle-Delgado and Chamberlain: St. Mark's Hospital and St. Mark's Diabetes Center, Internal Medicine at St. Mark's, 1160 East 3900 South, Suite 1200, Salt Lake City, UT 84124.

Dr. Shubrook: Touro University California, College of Osteopathic Medicine, 1310 Club Drive, Vallejo, CA 94592.

Dr. Skolnik: Abington Family Medicine, 500 Old York Road, Suite 108, Jenkintown, PA 19046.

Dr. Trujillo: Skaggs School of Pharmacy and Pharmaceutical Sciences, University of Colorado Anschutz Medical Campus, 12850 East Montview Boulevard, V20-1222, Mail Stop C238, Aurora, CO 80045.

Author Contributions: Conception and design: K. Doyle-Delgado, J.J. Chamberlain, N. Skolnik.

Analysis and interpretation of the data: K. Doyle-Delgado, J.J. Chamberlain.

Drafting of the article: K. Doyle-Delgado, J.J. Chamberlain, J.H. Shubrook, N. Skolnik, J. Trujillo.

Critical revision for important intellectual content: K. Doyle-Delgado, J.J. Chamberlain, J.H. Shubrook, N. Skolnik, J. Trujillo.

Final approval of the article: K. Doyle-Delgado, J.J. Chamberlain, J.H. Shubrook, N. Skolnik, J. Trujillo.

Administrative, technical, or logistic support: K. Doyle-Delgado.

Collection and assembly of data: K. Doyle-Delgado, J.J. Chamberlain.

Appendix Figure. Drug-specific and patient factors to consider when selecting antihyperglycemic treatment for adults with type 2 diabetes.

	Efficacy	Hypoglycemia	Weight change	CV effects		Cost	Oral/SQ	Renal effects		Additional considerations
				ASCVD	HF			Progression of DKD	Dosing/use considerations*	
Metformin	High	No	Neutral (potential for modest loss)	Potential benefit	Neutral	Low	Oral	Neutral	Dosing/use considerations* • Contraindicated with eGFR <30 mL/min/1.73 m ²	Additional considerations • Gastrointestinal side effects common (diarrhea, nausea) • Potential for B12 deficiency
SGLT2 inhibitors	Intermediate	No	Loss	Benefits: empagliflozin, canagliflozin	Benefits: empagliflozin, dapagliflozin	High	Oral	Benefit: canagliflozin, empagliflozin, dapagliflozin	Renal dose adjustment required (canagliflozin, dapagliflozin, empagliflozin, ertugliflozin)	FDA Black Box: Risk of amputation (canagliflozin) • Risk of bone fractures (canagliflozin) • DKA risk (all agents, rare in T2DM) • Genitourinary infections (canagliflozin) • Volume depletion, hypotension, hypovolemia • ↑LDL cholesterol • Risk of Fournier's gangrene
GLP-1 RAs	High	No	Loss	Neutral; lisenalide	Neutral	High	SQ, oral (semaglutide)	Benefit: liraglutide	Renal dose adjustment required (lisenalide, lisenalide)	FDA Black Box: Risk of thyroid C-cell tumors (liraglutide, exenatide extended release) • Caution when initiating or increasing dose due to potential risk of acute kidney injury
DPP-4 inhibitors	Intermediate	No	Neutral	Neutral	Potential risk: saxagliptin	High	Oral	Neutral	Renal dose adjustment required (saxagliptin, saxagliptin, alogliptin); saxagliptin, alogliptin, sitagliptin in renal impairment	Potential risk of acute pancreatitis • Joint pain
Thiazolidinediones	High	No	Gain	Potential benefit: pioglitazone	Increased risk	Low	Oral	Neutral	No dose adjustment • Generally not recommended in renal impairment due to potential for fluid retention	FDA Black Box: Congestive heart failure (pioglitazone, rosiglitazone) • Fluid retention (edema; heart failure) • Benefit in NASH • Risk of bone fractures • Bladder cancer (pioglitazone) • ↑LDL cholesterol (rosiglitazone)
Sulfonylureas (2nd generation)	High	Yes	Gain	Neutral	Neutral	Low	Oral	Neutral	Glyburide: not recommended in renal impairment; initiate conservatively to avoid hypoglycemia	FDA Special Warning: on increased risk of cardiovascular mortality associated with sulfonylureas (tolbutamide)
Insulin	Highest	Yes	Gain	Neutral	Neutral	Low	SQ, inhaled	Neutral	Lower insulin doses required with a decrease in eGFR; titrate per clinical response	Injection site reactions • Higher risk of hypoglycemia with human insulin (NPH or premixed formulations) vs. analogs

ASCVD = atherosclerotic cardiovascular disease; CKD = chronic kidney disease; CV = cardiovascular; CVD = cardiovascular disease; DKA = diabetic ketoacidosis; DKD = diabetic kidney disease; DPP-4 = dipeptidyl peptidase-4; eGFR = estimated glomerular filtration rate; FDA = U.S. Food and Drug Administration; GLP-1 RA = glucagon-like peptide-1 receptor agonist; HF = heart failure; LDL = low-density lipoprotein; NASH = nonalcoholic steatohepatitis; NPH = neutral protamine Hagedorn; SGLT-2 = sodium-glucose cotransporter-2; SQ = subcutaneous; T2DM = type 2 diabetes mellitus. (Reproduced from Diabetes Care. 2020;43(Suppl 1):S101 with permission from The American Diabetes Association. Copyright 2020 by the American Diabetes Association.)

* For agent-specific dosing recommendations, please refer to the manufacturer's prescribing information.

† FDA approved for CVD benefit.

‡ FDA approved for HF indication.

§ FDA approved for CKD indication.